

User's Manual

JC-100 Control Utility

Important

Please read this User's Manual carefully to familiarize yourself with safe and effective usage procedures.

The latest software and Installation Guide are available for download from our site:
<http://www.eizo.com>

1. Introduction	3
1-1. Features.....	3
2. Setting Up	4
2-1. System Requirements	4
2-2. Installing the JC-100 Control Utility	4
2-3. Uninstalling the JC-100 Control Utility	6
3. Startup and exit.....	7
3-1. Starting JC-100 Control Utility Software	7
3-2. Display the version information.....	7
3-3. Exit	7
4. Customizing the key settings	8
4-1. Main screen.....	8
4-2. Editing the command settings	9
4-3. Resetting controller settings	12
5. File I/O.....	13
5-1. Writing and transferring the mode setting to the controller....	13
5-2. Writing and reading the key assignment information...	15
6. Attaching Overlay Sheet	16
7. Troubleshooting.....	17



Copyright © 2010 EIZO NANA O CORPORATION. All rights reserved.

No part of this manual may be reproduced, stored in a retrieval system, or transmitted, in any form or by any means, electronic, mechanical, or otherwise, without the prior written permission of EIZO NANA O CORPORATION.

EIZO NANA O CORPORATION is under no obligation to hold any submitted material or information confidential unless prior arrangements are made pursuant to EIZO NANA O CORPORATION's receipt of said information. Although every effort has been made to ensure that this manual provides up-to-date information, please note that EIZO monitor specifications are subject to change without notice.

Windows and Windows Vista are registered trademarks of Microsoft Corporation in the United States and other countries.

EIZO, EIZO logo and ColorEdge are registered trademarks of EIZO NANA O CORPORATION in Japan and other countries.

All other trademarks are the properties of their respective owners.

1. Introduction

The JC-100 Control Utility software controls the functions of the JC-100.

1-1. Features

- **Customization function of the key setting**

The commands assigned to function keys can be changed. This software can change the settings of some commands. In addition, some commands can only be set using this software.

- **File I/O function of the key assignment information**

The command information (key assignment information) allocated to the function keys can be output to a file. The file is useful for sharing the same key assignment across multiple controllers.

- **Read/write function of monitor setting**

The setting can be easily changed by storing the adjustment settings of the monitor in the JC-100. The monitor setting can be written into and read from a file to apply the setting to a monitor.

2. Setting Up

2-1. System Requirements

JC-100 Control Utility Software operates under the system shown below.

OS	Microsoft Windows XP(32 bit) Microsoft Windows Vista(32 bit) Microsoft Windows 7 (32 bit)
Supported controllers	JC-100

2-2. Installing the JC-100 Control Utility

Note

- To install JC-100 Control Utility, the “PC administrator” account is required as a user account.
- Please consult your system administrator for your account.

To install the software from the JC-100 Control Utility Disk (CD-ROM)

1 Insert the “JC-100 Control Utility Disk” to the CD-ROM drive.

Menu opens automatically. Click “Software” tab.
Click “JC-100 Control Utility” on the menu.
Go to Step 2 ([page 5](#)).

Tips

- If the menu does not appear automatically, select [Start] - [Run]. Click [Browse] and select “Launcher.exe” of the “JC-100 Control Utility”. Click [OK] then the menu starts up.

To download and install the software from our website

1 After unzip the downloaded file, click “setup.exe”.

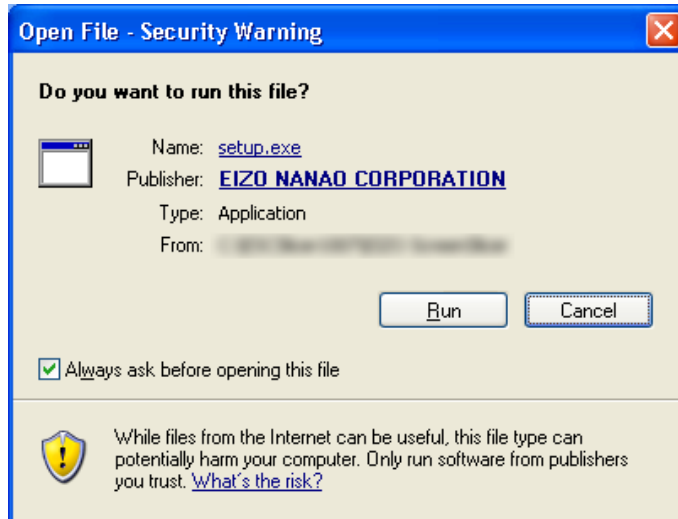
The setup wizard starts up.
Go to Step 2 ([page 5](#)).

2 Install the software.

Follow the instruction of the menu to install the software.

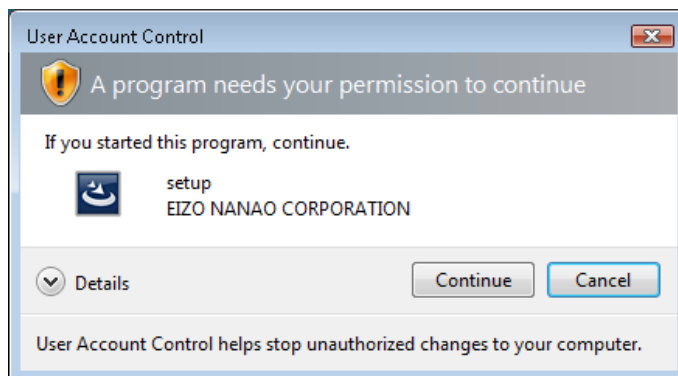
Tips

- If your OS is Windows XP, the “Security Warning” dialog may appear.* 1
Click [Run] to open the menu.



*1 The “Security Warning” dialog box does not appear depending on the setting

- If your OS is Windows Vista or Windows 7 the “User Account Control” dialog may appear.* 2
Click [Continue] (Windows Vista)/ [Yes] (Windows 7) to activate the menu.



*2 The “User Account Control” dialog box does not appear depending on the setting.

Note

- If your OS does not meet the system requirements, the error message will appear and the installation will not be executed.

2-3. Uninstalling the JC-100 Control Utility

Windows XP

- 1** Select [Control Panel] - [Add or Remove Programs]
- 2** Select “JC-100 Control Utility” from the list and click [Remove] to remove the software

Windows Vista / Windows 7

- 1** Select [Control Panel] - [Programs] and click [Uninstall a Program]
- 2** Select “JC-100 Control Utility” from the list and click [Uninstall]

3. Startup and exit

3-1. Starting JC-100 Control Utility Software

- 1 Turn the controller's FUNC switch to the "PROG" position
- 2 Connect the controller's USB upstream port with the PC's USB downstream port.

Note

- If the PC is connected to multiple controllers with USB cables, this software cannot recognize the controller. Connect one controller only with the PC.
-

- 3 Click [Start] - [All programs] - [EIZO] - [JC-100 Control Utility]

3-2. Display the version information

Select [About JC-100 Control Utility] in the Help menu

The version information screen is displayed.

3-3. Exit

Select [Exit] in the File menu

The software exits.

Tips

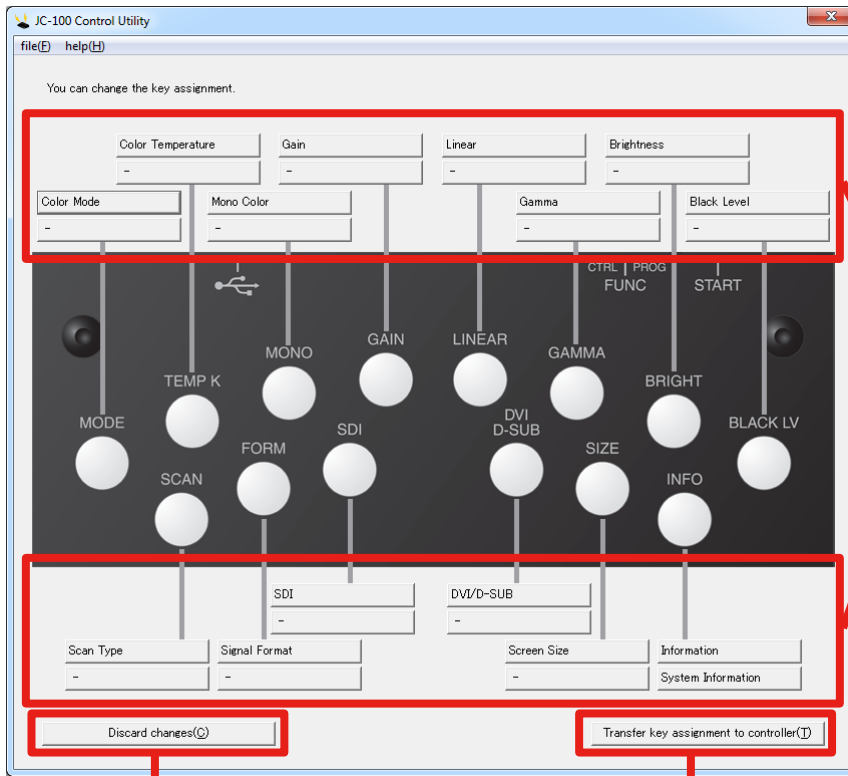
- To use the controller for monitor control, turn the controller's FUNC switch to the "CTRL" position.
 - After the FUNC switch is turned to the "CTRL" position, press the START button to restart this controller.
-

4. Customizing the key settings

The commands allocated to function keys of the controller can be changed.

4-1. Main screen

The screen below is the one that first displays after the software is started.



Select a command for each key.

Discards edits to key assignments and returns to previous state.

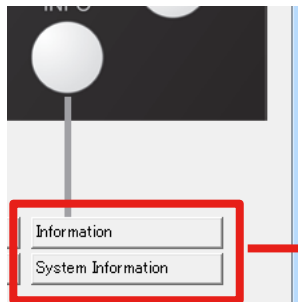
Sends the key assignment information to the controller.

4-2. Editing the command settings

The commands allocated to the function keys can be customized.

Procedure

- 1 Click the button corresponding to the desired function key.



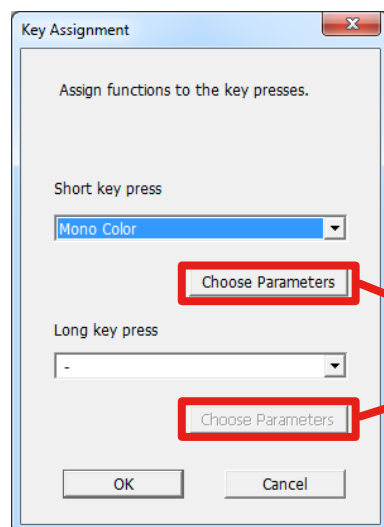
Upper: Customizes the command that is activated by simply clicking the command button.

Lower: Customizes the command that is activated by pressing the command button for 3 seconds or more.

Whether the upper or lower button is pressed, the key assignment screen appears.

- 2 Set the key's command.

A command can be chosen according to the duration for which the key is pressed (short key press and long key press for 3 seconds or more). For more information on the available commands, refer to [“Configurable command list”](#) (page 10).



Valid when the selected command can be customized.
[“Customizing the commands”](#) (page 11)

Press [OK] to exit the adjustment.

- 3 Set up all the function key commands that you want to customize.

- 4 Click [Transfer key assignment to controller].

The assignment information is transferred to the controller

Tips

- To restore the original command setting of the function key, click [Discard changes].

Configurable command list

For more information on the commands in the controller's default setting, refer to the User's Manual of the controller.

Command	Short key press	Long key press	Details
DVI/DSUB	√	-	Changes the DVI/D-SUB signal input.
SDI	√	-	Changes the SDI input signal.
Screen Size	√	-	Changes the scale factor of the screen.
Signal Format	√	-	Changes the SDI signal format.
Safety Zone*	√	-	Sets up Safety Zone. The commands can be customized. (see page 11) Established in combination with Save Safety Zone Setting. Press the function key to change the setting. Turn the jog dial to scale up/down the frame. The frame size can be in the range between 80% and 100%. Option: HDTV 16:9 / HDTV 4:3 / HDTV 720P / NTSC1 / NTSC2 / PAL1 / PAL2 / No frame
Color Mode	√	-	Changes the Color Mode.
Gamma	√	-	Adjusts the gamma value.
Linear	√	√	Changes the image processing setting.
Color Temperature	√	-	Adjusts the color temperature.
Emulation 0~3*	√	√	Reserved for expansion in the future.
Brightness	√	√	Adjusts the brightness.
Black Level	√	-	Adjusts the black level.
Mono Color	√	√	Displays the screen in monochrome. The commands can be customized. (see page 11)
Scan Type*	√	-	Changes the scan type.
RGB Gain*	√	-	Adjusts each RGB gain.
Gain	√	√	Adjusts the Gain value.
Information	√	√	Displays the monitor information screen.
System Information	√	√	Displays the version of the controller and monitor.
Save Mode 0~5*	√	√	Press the function key to save the adjustment conditions of the color mode displayed into up to six controllers. For more information on the saved content, refer to page 11.
Load Mode 0~5*	√	√	Press the function key to load the adjustment conditions of the color mode saved using Save Mode 0 to 5 and then transfer it to the monitor.
10-bit/8-bit Display*	√	√	Changes the display between the 10-bit and 8-bit display.
Save Safety Zone Setting*	√	√	Saves the Safety Zone setting. For more information on the saved content, refer to page 11.
—	√	√	Does not apply any command to the key.

* The command can be set up by using JC-100 Control Utility.

Pair commands

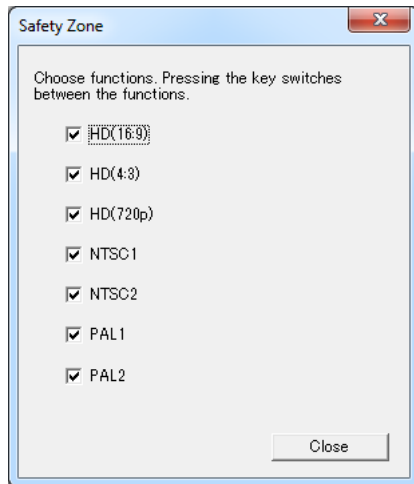
The commands Safety Zone and Save Safety Zone Setting, Save Mode 0 to 5 and Load Mode 0 to 5, and Information and System Information are called pair commands. When one command is set as a short press command, the other is set as a long press command. For example, when Save Mode 1 is set as a short press command, Load Mode 1 is automatically set as a long press command.

Tips

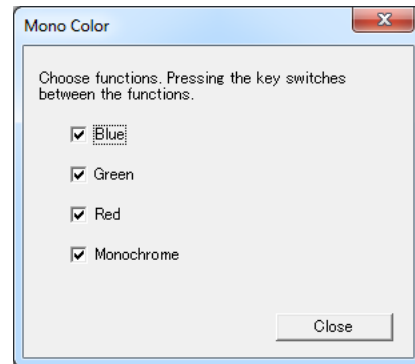
- Even if one of the pair commands is set as a long press command, the corresponding short press command is not changed.
- The functions applied to the pair commands can be changed while setting up the commands.

Customizing the commands

The contents applied to the controller by the Safety Zone and Mono Color commands can be changed.



Safety Zone



Mono Color

Settings saved for Save Mode 0 to 5

The following settings are saved on the controller as the contents of the commands Save Mode 0 to 5.

- Color Mode
- Brightness
- Black Level
- Gamma
- Color Temperature
- RGB Gain
- 10-bit/8-bit Display

Note

- The settings saved and applied are only for the SDI input.

Settings saved for Save Safety Zone Setting

The following settings are saved on the controller as the content of the command Save Safety Zone Setting.

- Settings displayed (NTSC1, etc.)
- Frame size of every Safety Zone (%)

4-3. Resetting controller settings

Various settings of the controller can be reset to the factory default settings.

Resetting the key assignment information

Select [Reset] and [Reset key assignment to default(R)...] in the File menu to reset the key assignment information in the controller.

Resetting the mode settings to default

Select [Reset] and [Reset Mode settings to default(M)...] in the File menu to reset the mode settings saved using Save Mode 0 to 5 to the controller.

Resetting the content saved in Safety Zone

Select [Reset] and [Reset Safety Zone settings to default(Z)...] in the File menu to reset the settings saved on the controller using Safety Zone.

5. File I/O

The customized settings for function keys and color mode can be written into a file.

5-1. Writing and transferring the mode setting to the controller

The adjustment conditions of the monitor can be written into a file. In addition, the adjustment conditions of the monitor can be loaded from the file and transferred to the controller.

Save the mode setting into the controller

To write the mode setting into a file or transfer the mode setting to the controller, the command setting of the controller needs to be changed. Set a command of Save Mode 0 to 5 to the function key.

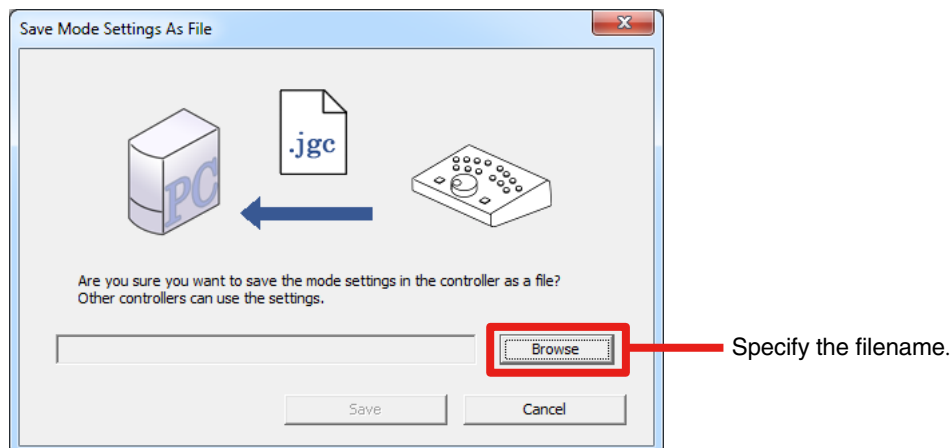
For more information refer to the [“4-2. Editing the command settings”](#) (page 9).

Write procedure

- 1 Select [Save mode settings as file(S)...] in the File menu.

The file save screen is displayed.

- 2 Click [Browse] to specify the filename.



When the filename is specified, the [Save] button becomes available.

- 3 Click [Save] to save the file.

When the file is successfully saved, a message is displayed.

Tips

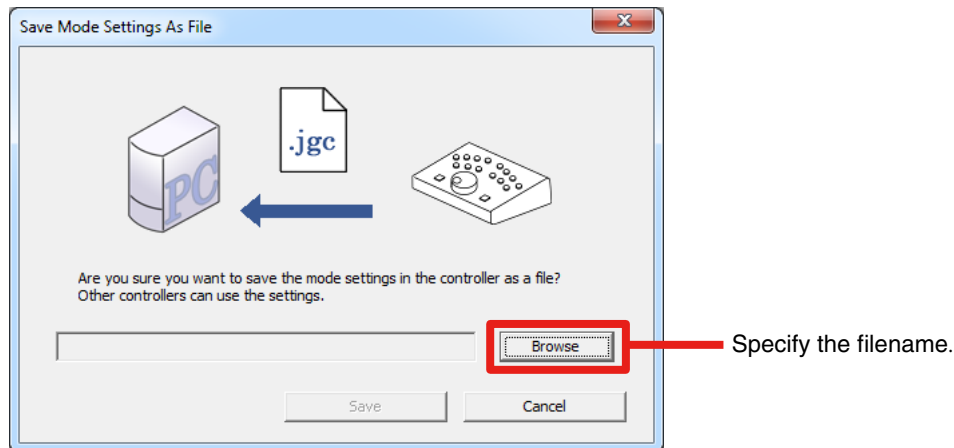
- The file extension to be written is .jgc.

Transfer procedure

1 Select [Transfer mode settings from file to controller(L)...] in the File menu.

The file transfer screen is displayed.

2 Click [Browse] to specify the file.



When the file is loaded successfully, the [Transfer] button becomes available.

3 Click [Transfer].

When the file is successfully transferred, a message is displayed and the content of the mode setting file is transferred to the controller.

Tips

- To transfer the mode settings transferred to the controller again to the monitor, follow the procedure below:
 1. Apply one command of Save0 to 5 to a function key of the controller.
 2. Connect the controller's USB downstream port with the monitor's USB upstream port with a USB cable.
 3. Turn the controller's FUNC switch to the "CTRL" position.
 4. Press the controller's START button.
 5. Press the key to which one of Load Mode 0 to 5 is applied.

As Load 0 and Save 0 are pair commands ([page 10](#)), be aware that pressing a key for the wrong duration could execute the Save operation and thus the settings loaded from the file could be discarded.

5-2. Writing and reading the key assignment information

The key assignment information can be written into a file. In addition, the command settings in the controller can be written into a file by loading the file.

Write procedure

1 Select [Save key assignment as file(W)...] in the File menu.

2 Specify the filename and save the file.

A message is displayed.

Tips

- The assignment information is written into the csv file.
-

Read procedure

1 Select [Load key assignment from file(E)...] in the File menu.

2 Specify the file to be read.

A message is displayed and the command settings are reflected in the main screen.

Tips

- To transfer the command settings loaded from the file to the controller, click [Transfer key assignment to controller(T)...].
-

6. Attaching Overlay Sheet

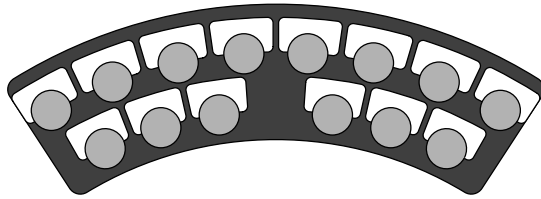
When the command setting of a function key is changed in the controller, the function key's name can be written in the Overlay Sheet and the sheet can be attached to the controller.

Note

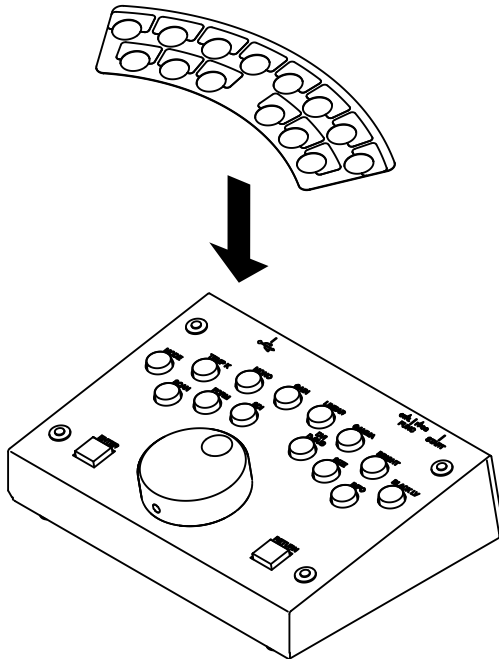
- Write down the name of the function key on the Overlay Sheet.
- Use an oil-based pen.

Attaching

- 1 Write down the name on the Overlay Sheet.



- 2 Attach the Overlay Sheet as shown below.



7. Troubleshooting

If a problem still remains after applying the suggested remedies, contact your local dealer.

Problems	Possible cause and remedy
1. The software does not recognize the controller.	<ul style="list-style-type: none"> • Check whether the controller and PC are connected via the USB cable. • Check whether the controller's FUNC switch is set to the "CTRL" position. • If the PC is connected to multiple controllers with USB cables, this software cannot recognize the controller. Connect only one controller with the PC.
2. The command setting is not reflected in the controller.	<ul style="list-style-type: none"> • Check whether the controller and PC are connected via the USB cable. • Click [Transfer key assignment to controller(T)...].
3. A command cannot be set as a long press command.	<ul style="list-style-type: none"> • It is not possible to set any command that is not displayed in the [Long key press] pulldown list.



EIZO NANO CORPORATION

<http://www.eizo.com>

2nd Edition-August, 2010

03V23274B1
(U.M-JC100CU)